

## CHX10 Rabbit mAb

## 产品信息

产品名称	产品编号	规格
CHX10 Rabbit mAb	31554ES50	50 $\mu$ L
	31554ES60	100 $\mu$ L

## 产品简介

Plays a significant role in the specification and morphogenesis of the sensory retina. May also participate in the development of the cells of the inner nuclear layer, particularly bipolar cells.

## 产品性质

别名	CHX 10; HOX10; MCOP2; MCOPCB3; RET1; Vsx2
SwissProt ID	P58304
基因 ID	338917
免疫原	A synthesized peptide derived from human CHX10.
缓冲液	Rabbit IgG in phosphate buffered saline , pH 7.4, 150mM NaCl, 0.02% sodium azide and 50% glycerol.
克隆类型	Monoclonal Antibody
宿主	Rabbit
物种反应	Human, Mouse, Rat
推荐应用	WB, FC
纯化方式	Affinity Purified

## 应用

稀释比 WB:1/500-1/1000; FC: 1/50-1/100

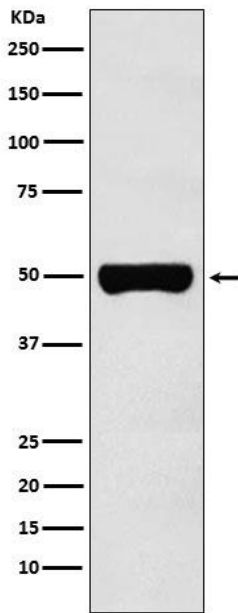
## 储存条件

-25~-15°C保存

## 注意事项

1. 避免反复冻融。
2. 本产品仅作科研用途。
3. 为了您的安全和健康，请穿实验服并佩戴一次性手套操作。

## Western blot



Western blot analysis of CHX10 in Y79 lysates using CHX10 antibody.