

Rhodopsin Rabbit mAb

产品信息

产品名称	产品编号	规格
Rhodopsin Rabbit mAb	31555ES50	50 μ L
	31555ES60	100 μ L

产品简介

Photoreceptor required for image-forming vision at low light intensity. Required for photoreceptor cell viability after birth. Light-induced isomerization of 11-cis to all-trans retinal triggers a conformational change leading to G-protein activation and release of all-trans retinal.

产品性质

别名	CSNBAD1; OPN2; opsd; Opsin 2 rod pigment; Opsin2;
SwissProt ID	P08100
基因 ID	6010
免疫原	A synthesized peptide derived from human Rhodopsin.
缓冲液	Rabbit IgG in phosphate buffered saline , pH 7.4, 150mM NaCl, 0.02% sodium azide and 50% glycerol.
克隆类型	Monoclonal Antibody
宿主	Rabbit
物种反应	Human, Rat
推荐应用	WB, IHC-P
纯化方式	Affinity Purified

应用

稀释比 WB:1/500-1/1000; IHC: 1/50-1/100

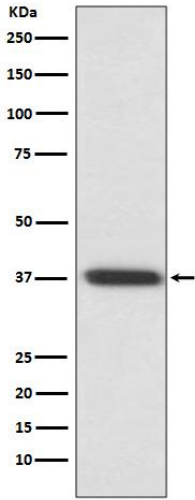
储存条件

-25~-15°C保存

注意事项

1. 避免反复冻融。
2. 本产品仅作科研用途。
3. 为了您的安全和健康，请穿实验服并佩戴一次性手套操作。

Western blot



Western blot analysis of Rhodopsin in rat eyeball lysates using Rhodopsin antibody.